

# National University of Singapore Faculty of Engineering –



# Profile

<b>Undergraduates:</b>	~ 7,400	[~26,700 in NUS]
<b>Graduate students:</b>	~ 3,000	[~10,600]
<b>Academic staff :</b>	~ 320	[~2,600]
<b>Research staff:</b>	~ 570	
<b>Admin/support/lab staff:</b>	~ 400	

(Student figures as at 1 August 2011)

Staff figures – FoE: as at 30 November 2011; NUS: as at June 2011

## 8 Academic Departments/Divisions

### Undergraduate Degrees

**B.Eng.: 10 full-time programmes; 4 years**

**B.Tech.: 5 part-time programmes**

### Graduate degrees

By coursework:	<b>Full-time M.Sc.</b>	<b>1 - 1½ years</b>
	<b>Part-time M.Sc.</b>	<b>2½ years</b>
By research:	<b>M.Eng.</b>	<b>~ 2 years</b>
	<b>Ph.D.</b>	<b>~ 4 years</b>



# Enhancing Engineering Education

Stretching students' potential via a range of optional programmes

- Shaping a global mindset
  - Overseas Undergraduate Research Opportunities Programme (UROP)
  - NUS Overseas Colleges
  - Student Exchange Programme
  - Joint/Dual degree programmes with renowned partner universities
  
- Enriching learning through experience in:
  - Industrial Attachment
  - Vacation Internship Programme
  - Technopreneurship & Incubation Programme
  - Innovation Programme
  - UROP
  - Independent Work Programme



*ME student, Roy Loi, with his Integrated Alarm and Emergency Lighting System commissioned by the Sembawang Shipyard*

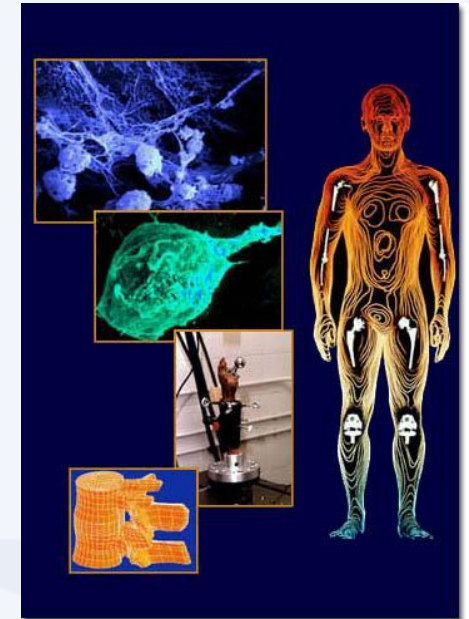
## Moving forward

- Global partnerships – an important and integral aspect of the Faculty’s perspectives
- Currently, NUS has partnerships with over 300 overseas universities
- Consolidation of interactions with key partners to further strengthen relationships with collaborations on various fronts – e.g. student exchange, double/joint degree programmes, research attachments, research collaborations, joint appointments, etc.



# Design-Centric Curriculum

- New alternative learning pathway to complement existing programmes
- Emphasizes design
- Offers a platform bringing together engineering, form, function, aesthetics, culture and lifestyle
- Exposes students to real-life design projects and design-focused modules
- Equips students to solve problems from multidisciplinary perspectives
- Design projects will centre around three broad themes:
  - *Future Transportation Systems*
  - *Engineering in Medicine*
  - *Smart Sustainable Cities*



# Global Engineering Programme (GEP)

- Launched in Academic Year 2009/10
- To attract outstanding students to Engineering and maximise their potential
- Characterised by a strong global aspect through incorporation of a period of learning at a top university partner overseas
- Early exposure to research
- Direct progression upon graduation to graduate studies at a GEP partner university overseas
- Leads to 2 degrees:
  - B.Eng from NUS
  - Masters degree (or PhD) from a partner university



# End of Presentation

